

DA

DANIEL
ALAIN



DA

FOLLEA[®] product presentation

2021

Our primary objective:

To improve the lives of women
with hair problems.





THE STYLE COLLECTION

- EXCLUSIVE EUROPEAN HAIR WITH CUTICLES PARTIALLY INTACT (EP HAIR).
- HIDDEN KNOTS FOR OPTIMAL DISCRETION > „FOLLEA® SKIN TOP“.
- COMFORTABLY SOFT OPEN LACE FRONT FROM TEMPLE TO TEMPLE – WITH BLEACHED KNOTS.
- DOUBLE LINED BACK WITH HIGH-GRADE SPANDEX MATERIAL FOR LONGER DURABILITY AND WEARABILITY.
- 100% HAND-TIED.
- SIX AVAILABLE HAIR LENGTHS: 6LY (15/28 CM), 8LY (20/33 CM), 10LY (25/38 CM), 12LY (30/43 CM), 14LY (35/48 CM) AND 16LY (40/53 CM).
- AVAILABLE HAIR COLORS: 16 + 1 (GREY IN 6LY AND 8LY ONLY).

The STYLE cap (12C)

- Comfortably soft open lace front, from temple to temple, for a most realistic hairline.
- Revolutionary, breathable and comfortable silk-like Spandex with tiny holes barely visible to the eye, to prevent hair inversion through the cap.
- Handmade French top for a true-to-skin appearance with hidden knots and return hair for more volume.
- S-hook, covered adjustable elastic bands on each bottom side for added security.
- Four adjustable stays on the sides & nape area.
- Standard size M; surcharges apply for other sizes.



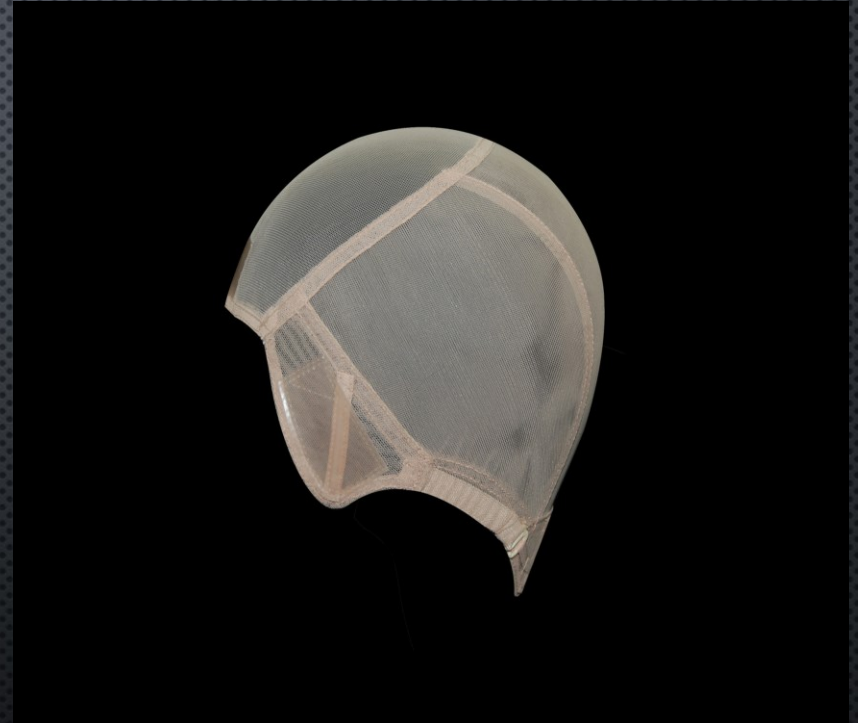


THE CHIC COLLECTION

- EXCLUSIVE PREMIUM EUROPEAN HAIR WITH CUTICLES INTACT (PE HAIR).
- SLEEK AND FLAT TOP WITH HIDDEN KNOTS > FOLLEA® FRENCH PART WITHOUT RETURNS FOR A TRUE-TO-SCALP APPEARANCE.
- ALTERNATIVELY CLOSED FRONT AREA OR EXTENDED LACE FRONT WITH BLEACHED KNOTS FOR GREATEST POSSIBLE FLEXIBILITY
- DOUBLE-LINED BACK WITH HIGH-GRADE SPANDEX MATERIAL FOR LONGER DURABILITY AND WEARABILITY.
- 100% HAND-TIED.
- THREE AVAILABLE HAIR LENGTHS : 8LY (20/33 CM), 10LY (25/38 CM), 14LY (35/48CM).
- AVAILABLE HAIR COLORS : 10

The CHIC Cap (03C/03CL)

- Closed front with under-ventilation; ideal for blending with own hairline or for fringe hairstyles.
- OR – New: Optionally also with extended lace front (from temple to temple) for a more realistic hairline.
- Revolutionary, breathable and comfortable silk-like Spandex with tiny holes barely visible to the eye, to prevent hair inversion through the cap.
- Handmade, non-voluminous French top for a true-to-skin appearance with hidden knots.
- S-hook, covered adjustable elastic bands on each bottom side for added security.
- Four adjustable stays on the sides & nape area.
- Standard size M; for other sizes surcharges apply.



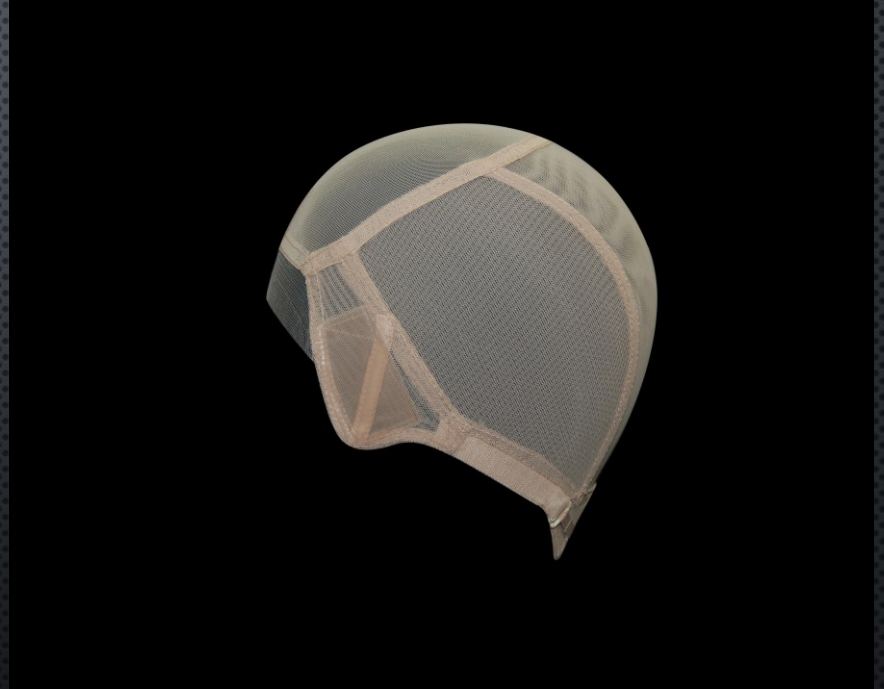


THE GRANDEUR COLLECTION

- EXCLUSIVE, FINEST HAND-SELECTED EUROPEAN HAIR WITH CUTICLES INTACT (HS HAIR).
- COMFORTABLY SOFT OPEN LACE FRONT FROM TEMPLE TO TEMPLE – WITH BLEACHED KNOTS.
- VERY FLAT AND NATURAL TOP WITH HIDDEN KNOTS (FOLLEA FRENCH PART) FOR A TRUE-TO-SCALP APPEREARANCE.
- DOUBLE-LINED BACK WITH HIGH-GRADE SPANDEX MATERIAL FOR LONGER DURABILITY AND WEARABILITY.
- 100% HAND-TIED.
- AVAILABLE HAIR LENGTH: 16 LY (40 CM LAYERED/53 CM OVERALL).
- FIVE AVAILABLE ROOTED HAIR COLORS: 3051, 3080, 5050, 10031, 11031.

The GRANDEUR cap (03D)

- Comfortably soft open Lace Front, from temple to temple, for a most realistic hairline.
- Revolutionary, breathable and comfortable silk-like Spandex with tiny holes barely visible to the eye, to prevent hair inversion through the cap.
- Handmade non-voluminous French top with hidden knots for a true-to-skin appearance and without returns.
- S-hook, covered adjustable elastic bands on each bottom side for added security.
- Four adjustable stays on the sides & nape area.
- Standard size M; surcharges apply for other sizes.



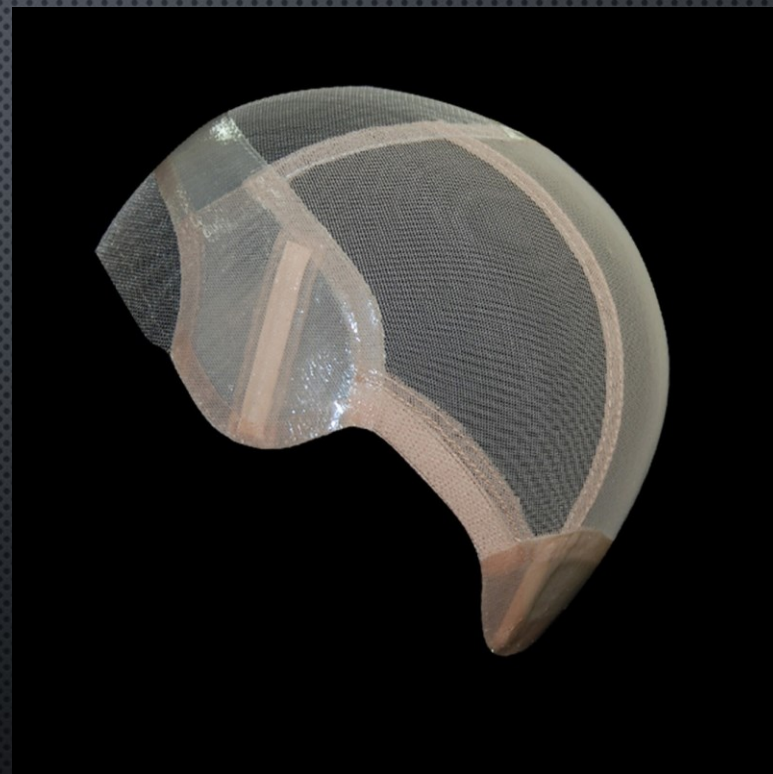


THE GRIPPER LITE COLLECTION

- EXCLUSIVE EUROPEAN HAIR WITH CUTICLES PARTIALLY INTACT (EP HAIR).
- HIDDEN KNOTS FOR OPTIMAL DISCRETION > „FOLLEA® SKIN TOP“.
- COMFORTABLY SOFT OPEN LACE FRONT FROM TEMPLE TO TEMPLE – WITH BLEACHED KNOTS.
- DOUBLE-LINED BACK WITH HIGH-GRADE SPANDEX MATERIAL FOR LONGER DURABILITY AND WEARABILITY.
- 100% HAND-TIED.
- MECIDAL-GRADE SILICONE PANELS ALONG THE PERIMETER.
- FOUR AVAILABLE HAIR LENGTHS: 6LY (15/28cm), 8LY (20/33 cm), 12LY (30/43 cm), 14LY (35/48cm).
- AVAILABLE HAIR COLORS: 16 + 1 (GREY ONLY IN 6LY AND 8LY).

The GRIPPER LITE Cap (04L)

- Comfortably soft open lace front, from temple to temple, for a most realistic hairline.
- Skin-friendly, medical-grade silicone on the inside of the cap, which guarantees secure hold without additional attachment.
- Revolutionary, breathable and comfortable silk-like Spandex with tiny holes barely visible to the eye, to prevent hair inversion through the cap.
- Handmade voluminous French top for a true-to-skin appearance with hidden knots and return hair for additional volume.
- Four adjustable stays on the sides & nape area.
- Standard sizes: XS – M (without surcharge).



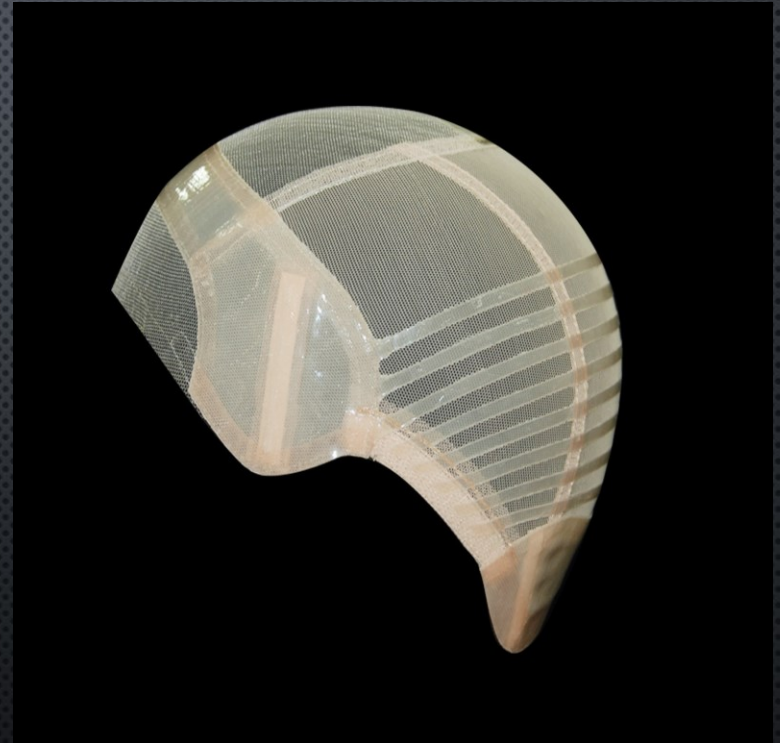


THE GRIPPER ACTIF COLLECTION

- EXCLUSIVE EUROPEAN HAIR WITH CUTICLE PARTIALLY INTACT (EP HAIR).
- HIDDEN KNOTS FOR OPTIMAL DISCRETION > „FOLLEA® SKIN TOP“.
- COMFORTABLY SOFT OPEN LACE FRONT FROM TEMPLE TO TEMPLE – WITH BLEACHED KNOTS.
- DOUBLE-LINED BACK WITH HIGH-GRADE SPANDEX MATERIAL FOR LONGER DURABILITY AND WEARABILITY.
- MECIDAL-GRADE SILICONE PANELS ALONG THE PERIMETER AND ADDITIONALLY IN THE BACK.
- FOUR AVAILABLE HAIR LENGTHS: 6LY (15/28cm), 8LY (20/33 cm), 12LY (30/43 cm), 14LY (35/48cm).
- AVAILABLE HAIR COLORS : 16 + 1 (GREY COLOR ONLY IN 6LY AND 8LY).
- GRIPPER ACTIF >ALWAYS FACTORY ORDER (NO STOCK ITEM)!

The GRIPPER ACTIF cap (04M)

- Comfortably soft open lace front, from temple to temple, for a most realistic hairline.
- Even more skin-friendly, medical-grade silicone along the perimeter as well as additionally on the lower, wefted back, for maximum hold without additional attachment.
- Revolutionary, breathable and comfortable silk-like Spandex with tiny holes barely visible to the eye, to prevent hair inversion through the cap.
- Back: 40% hand-tied/ 60% closely wefted (for longer durability).
- Handmade French top for a true-to-skin appearance with hidden knots and return hair for more volume.
- Four adjustable stays on the sides & nape area.
- Standard sizes: XS – M (without surcharge).





Our GRIPPER™ wigs are also ideal for children. Get in touch...

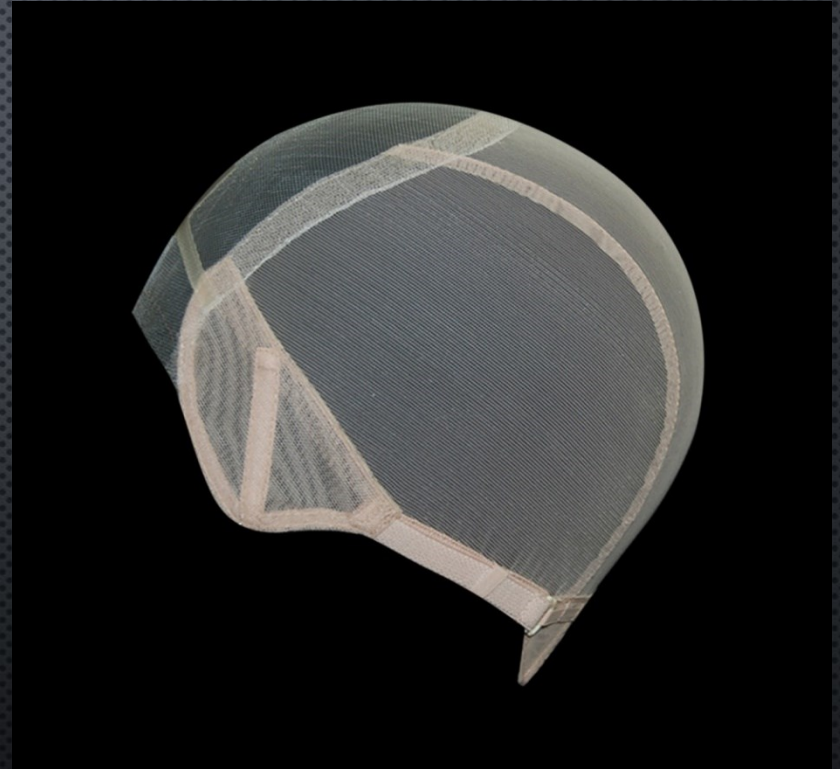


THE PIXIE COLLECTION

- **EXCLUSIVE EUROPEAN HAIR WITH CUTICLES PARTIALLY INTACT (EP HAIR).**
- **LACE TOP WITH ADDITIONAL VOLUME (SIGNATURE RETURN HAIR TECHNIQUE FOR ADDED FULLNESS).**
- **COMFORTABLY SOFT LACE FRONT WITH BLEACHED KNOTS FOR DARKER HAIR COLORS.**
- **CLOSELY WEFTED BACK FOR LONGER DURABILITY AND WEARABILITY.**
- **HAIR TEXTURE: STRAIGHT.**
- **AVAILABLE LENGTH: 5LY (12/25CM).**
- **10 AVAILABLE HAIR COLORS: 1010, 2060, 3050, 5005, 5030, 6020, 10030, 11800, 15040, 13015**

The PIXIE Cap (12D)

- Comfortably soft lace front with bleached knots.
- Closely wefted back allowing the hair to lay flat against the nape for a natural & seamless look.
- Hand-tied lace top with additional volume (returns).
- S-hook, covered adjustable elastic bands on each bottom side for added security.
- Four adjustable stays on the sides & nape area.
- Standard size M; surcharges apply for other sizes.



René

by FOLLEA®

- Premium human hair with cuticles partially intact.
- WS (World Select) Hair = Best human hair from all over the world (though not as fine as European human hair).
- Lace Top for added fullness as well as lace front with bleached knots for a natural hairline.
- Top: 100% hand-tied.
- Back: closely wefted
- S-hook, covered adjustable elastic bands on each bottom side for added security.
- Four adjustable stays on the sides & nape area.
- Available hair lengths: 10LY (25/28 cm), 12LY (30/43 cm), 14LY (35/48 cm) and 16LY (40/53 cm).
- 16 available colors, according to the FOLLEA® color ring
- Standard size M; surcharges apply for other sizes.





THE STYLE TOPETTE® (T800)

- EXCLUSIVE EUROPEAN HAIR WITH CUTICLE PARTIALLY INTACT (EP HAIR).
- HIDDEN KNOTS FOR OPTIMAL DISCRETION > „FOLLEA® SKIN TOP“.
- 100% HAND-TIED.
- THREE AVAILABLE HAIR LENGTHS: 8“ (APPROX. 20 CM LAYERED), 12“ (APPROX. 30 CM LAYERED) AND 16“ (APPROX. 40 CM LAYERED).
- AVAILABLE HAIR COLORS: 16 + 1 (GREY ONLY IN 8”/APPROX. 20 CM).

The STYLE TOPETTE® cap (T800)

- Clip-In model (6 pressure-sensitive clips sewn in as standard) which can also be attached using double-sided tape on the existing poly patches (just remove the clips).
- Closed front area with under-ventilation; ideal for blending with your own hairline or for fringe hairstyles.
- 100% hand-tied.
- Size M: 6" x 6 ½" (approx. 15,2 cm x 16,5 cm).
- Size L (factory order):
6" x 7 ½" (approx. 15,2 cm x 19 cm).

For a surcharge we can provide poly all along the perimeter (> perimeter bonding).



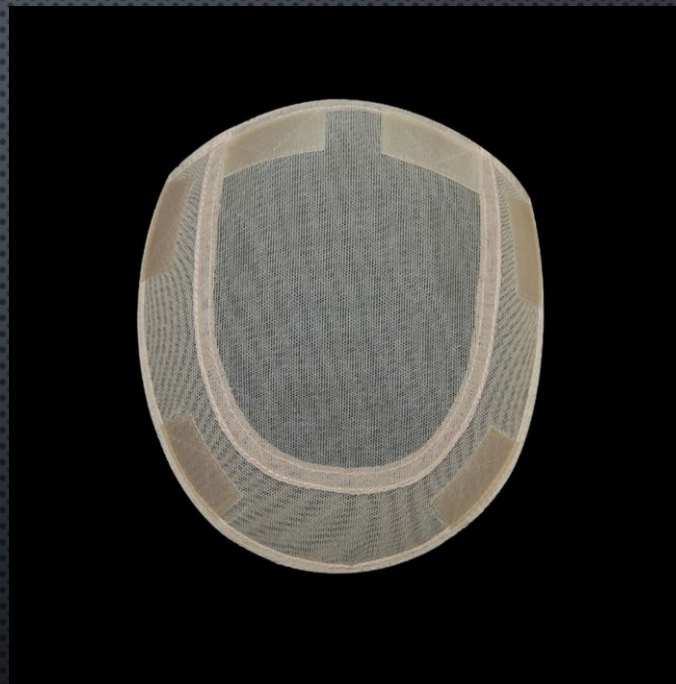


THE CHIC TOPETTE® (T900)

- **EXCLUSIVE PREMIUM EUROPEAN HAIR WITH CUTICLES INTACT (PE HAIR).**
- **SLEEK, NON-VOLUMINOUS TOP WITH HIDDEN KNOTS (FOLLEA® FRENCH PART).**
- **100% HAND-TIED.**
- **TWO AVAILABLE HAIR LENGTHS: 10" (APPROX. 20 CM GESTUFT) AND 14" (APPROX. 35 CM GESTUFT).**
- **AVAILABLE HAIR COLORS: 10.**

The CHIC TOPETTE® cap (T900)

- Clip-In model (6 clips sewn in as standard) which can also be attached using double-sided tape on the existing poly patches (just remove the clips).
- Closed front area with under-ventilation; ideal for blending with your own hairline or fringe hairstyles.
- 100% hand-tied.
- One available size: 6" x 6 ½" (approx. 15,2 cm x 16,5 cm).





THE TREND TOPETTE® (TA115)

- **SMALL, LIGHT-WEIGHT AND FLEXIBLE LACE TOP MODEL FOR COVERAGE OF EARLY STAGE DIFFUSE HAIR LOSS.**
- **EXCLUSIVE EUROPEAN HAIR WITH CUTICLES PARTIALLY INTACT (EP HAIR).**
- **100% HAND-TIED.**
- **TWO AVAILABLE HAIR LENGTHS: 8“ (APPROX. 20 CM LAYERED) AND 14“ (APPROX. 35 CM LAYERED).**
- **AVAILABLE HAIR COLORS: 16 + 1 (GREY ONLY IN 8”).**

The TREND TOPETTE® cap (TA115)

- Clip-In model with 5 pressure-free clips sewn in (only partially suitable for permanent attachment).
- 1/8-inch, closed front area with under-ventilation; ideal for blending with your own hairline or for fringe hairstyles.
- 100% hand-tied.
- Size M: 5" x 6" (approx. 12,7 cm x 15,2 cm).
- Size L: 6" x 7,5" (approx. 15,2 cm x 19 cm).





THE PETITE TOPETTE® (TA050)

- **VERY SMALL AND FLEXIBLE LACE TOPETTE TO COMPENSATE INITIAL HAIR LOSS, E.G. IN THE PART AREA.**
- **EXCLUSIVE EUROPEAN HAIR WITH CUTICLES PARTIALLY INTACT (EP HAIR).**
- **100% HAND-TIED.**
- **THREE AVAILABLE LENGTHS: 8" (APPROX. 20 CM LAYERED), 12" (APPROX. 30 CM LAYERED) AND 16" (APPROX. 40 CM LAYERED).**
- **AVAILABLE HAIR COLORS: 16 + 1 (GREY ONLY IN 8"/APPROX. 20 CM).**

PETITE TOPETTE® cap (TA050)

- Attachment: with glue or clips
 - > 4 pressure-sensitive clips sewn in around the poly trim, which can be easily removed for perimeter bonding.
- Closed front area with under-ventilation; ideal for blending with your own hairline.
- 100% hand-tied.
- One available size: 2.5" x 5.25" (approx. 6.3 cm x 13.3 cm).



WIG AND HAIRPIECE SPECIFICATIONS 2021

Product Description	Wig Collections							Topette Collections			
	Grandeur	Chic	Style	Gripper Lite	Gripper Actif	Pixie	René	Chic	Style	Trend	Petite
(Cap / Base Code)	03D	03C	12C	04L	04M	12D	12B	T900	T800	TA115	TA050
Fitting Cap Code ()	(12C)	(12C)	(12C)	(04L)	(04L)	(12B)	(12B)				
Front											
Open Lace (Temple-to-temple 0.5" X 6-7")	0.5" X 7"	optional	0.5" X 7"	0.5" X 7"	0.5" X 7"	0.5" X 6"	0.5" X 6"				
Closed lace		optional									
Bleached knots (with darker colors)								n.a.	n.a.	n.a.	n.a.
Top											
100% hand-tied											
French Top ("flat"), invisible knots											
Voluminous French Top, invisible knots											
Lace Top											
Return Hair for More Volume											
Back											
Light-weight silk-like spandex								n.a.	n.a.	n.a.	n.a.
100% hand-tied								n.a.	n.a.	n.a.	n.a.
Machine Wefted Back					partly			n.a.	n.a.	n.a.	n.a.
Hair Type											
Hand-Selected Premium European (HS), cuticle-intact											
Premium European (PE), cuticle-intact											
European (EP), partly descaled											
World Select (WS), partly descaled											
Accessories											
Adjustable Metal Stays								n.a.	n.a.	n.a.	n.a.
Adjustable Elastic Bands (for size regulation)								n.a.	n.a.	n.a.	n.a.
Medical-grade Silicone				Perimeter	Perimeter & extra in back			n.a.	n.a.	n.a.	n.a.
Pressure Sensitive Clips Sewn-In								6	6	5	4
Available Lengths and Colors											
Lengths	1	3	6	4	4	1	4	2	3	2	3
Colors	5	10	17	17	17	10	16	10	17	17	17

COLOR OPTIONS 2021

FOLLEA

DANIEL ALAIN

If you have any further inquiries, we will be happy to address them.

FOLLEA Germany GmbH
Feilitzschstr. 1
80802 München/Germany
Phone +49 (0)89 232 49 00
mail: info@follea.eu

Further information also available on our websites:
www.follea.de or www.danielalain.com



*MANY THANKS
FOR YOUR
ATTENTION!*

FOLLEA

DANIEL ALAIN

© 2021 FOLLEA GERMANY GMBH